

Staploe Medical Centre

New Premises, Soham Eastern Gateway



Front Elevation & Main Entrance

Key Information:

The vision for the new Staploe Medical Centre is to:

- deliver an innovative, transformative healthcare facility in Soham, to respond to population growth in an area in great need of infrastructure development.
- meet a wider range of healthcare needs in a more equitable way.
- offer proactive, responsive, and integrated care to patients, close to where they live.

This can only be achieved with a larger and more flexible space. This proposal offers:

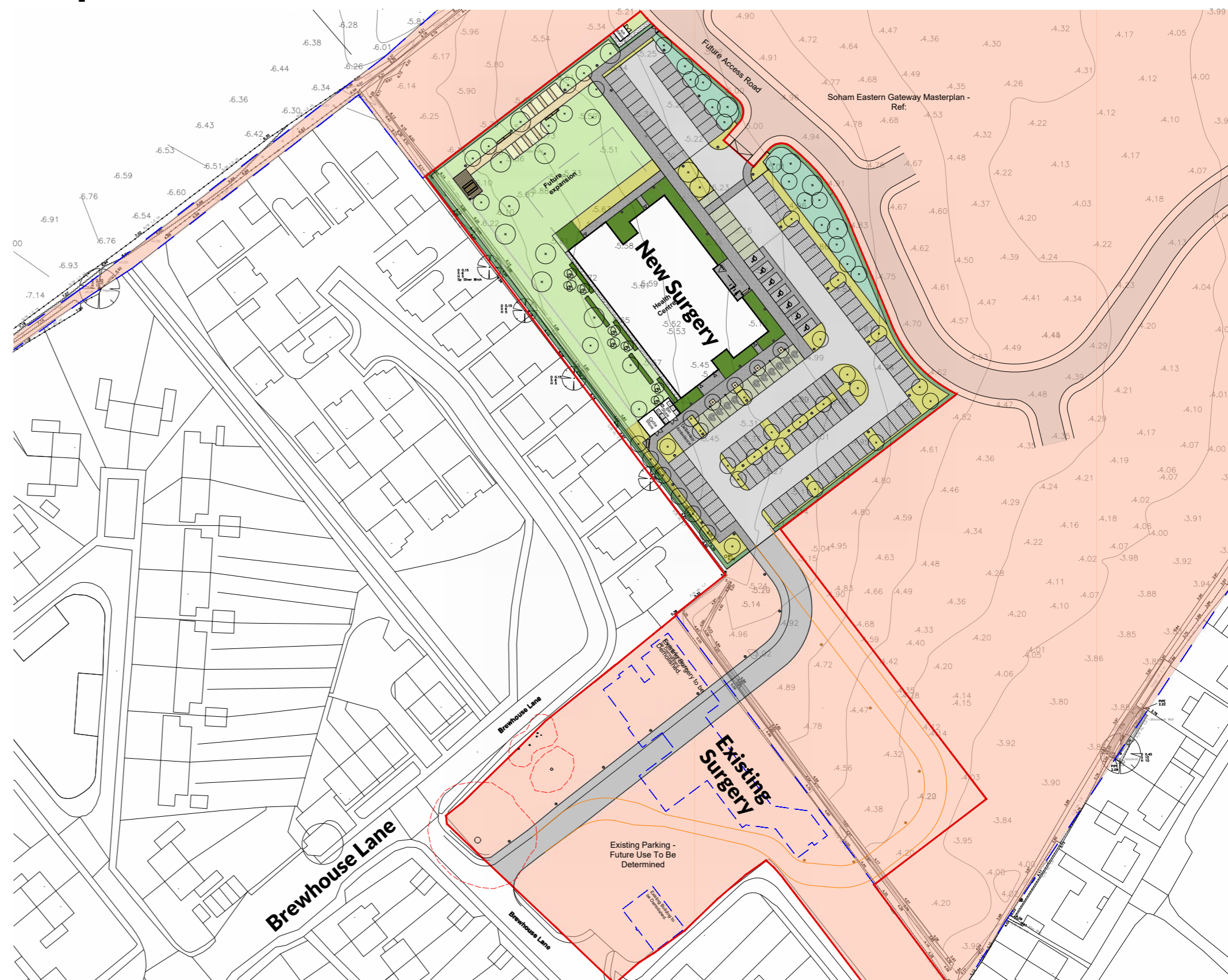
- A large plot within Soham Eastern Gateway, with room for future expansion.
- A central location within Soham, retaining good accessibility for patients.

- Vehicular and pedestrian access through Brewhouse Lane initially, followed by access from A142 once the proposed new roundabout into Soham Eastern Gateway is complete.
- A state of the art, new build facility, to be constructed with no disruption to existing service.
- An integrated pharmacy with independent access for out of hours operation and flexibility.
- Sustainable construction, achieving BREEAM Excellent Accreditation.
- On-site generation from Solar PV Panels and Air Source Heat Pumps.
- Extensive landscaping and sensory garden area create a green environment for the benefit of both patients and staff.

Site Location Plan



Proposed Site Plan



Staploe Medical Centre

New Premises, Soham Eastern Gateway

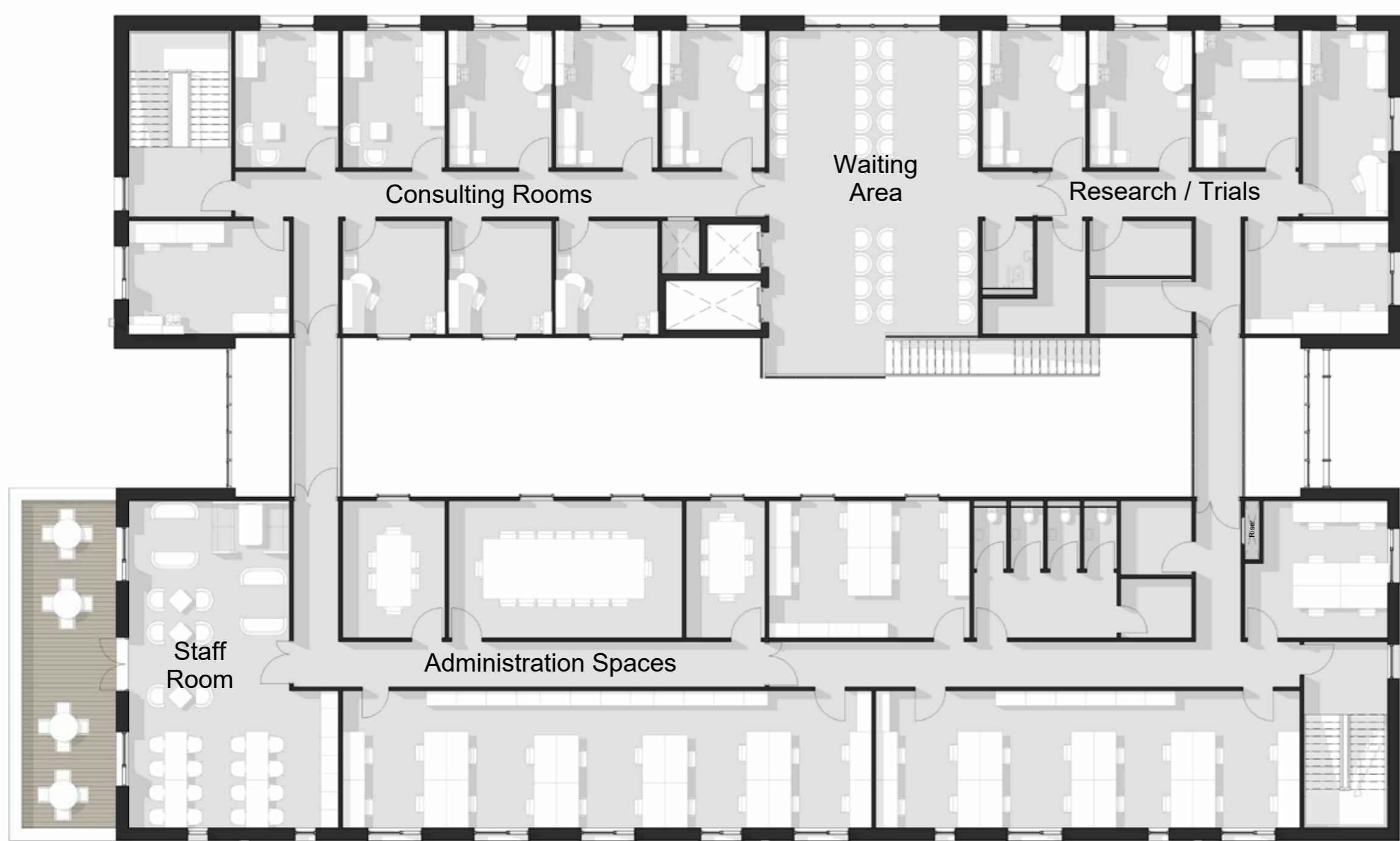
Key Benefits:

The building has been designed to maximise the service that can be provided to patients in the space available, while also providing a supportive and productive workplace for staff and trainees, improving our long-term recruitment and retention outlook.

The building provides:

- Approximately double the size of the existing practice:
- 124 parking spaces: 7 accessible, 10 electric charge point, 107 standard.
- 27 consulting rooms.
- Dedicated clinical trainee rooms and 'Duty Team' collaborative workspace.
- Innovative use of space will accommodate a doubling of clinical throughput when utilised fully.
- Dedicated Clinical Research Trials space.
- Pharmacy and Dispensary almost double the size of current, with integrated Pharmacy Robot.
- Improved patient facilities, better waiting area, accessible toilets, changing places room, dedicated breastfeeding and baby change rooms.
- Space to enable a higher number of face to face appointments and the return of a wide range of community services, including but not limited to:

- Podiatry and Specialist Podiatry
- Smoking Cessation
- Respiratory and Heart Failure
- Psychiatric nursing
- Much more, still in planning
- Significant improvements in staff facilities and non-patient facing workspace (proportionately sized communal staff rest area, various sizes of meeting rooms to support organisation development activities, flexible quiet workspace, etc)
- Building has been designed to create a calming environment for all, e.g:
 - Natural light and views onto greenspace and landscaping maximised throughout.
 - Simplified routes throughout for improved accessibility, wayfinding and patient experience.
 - All spaces are compliant with Health Building Notes Regulations.
 - Modern aesthetics, signage, fixtures and fittings.



First Floor Plan



Ground Floor Plan

